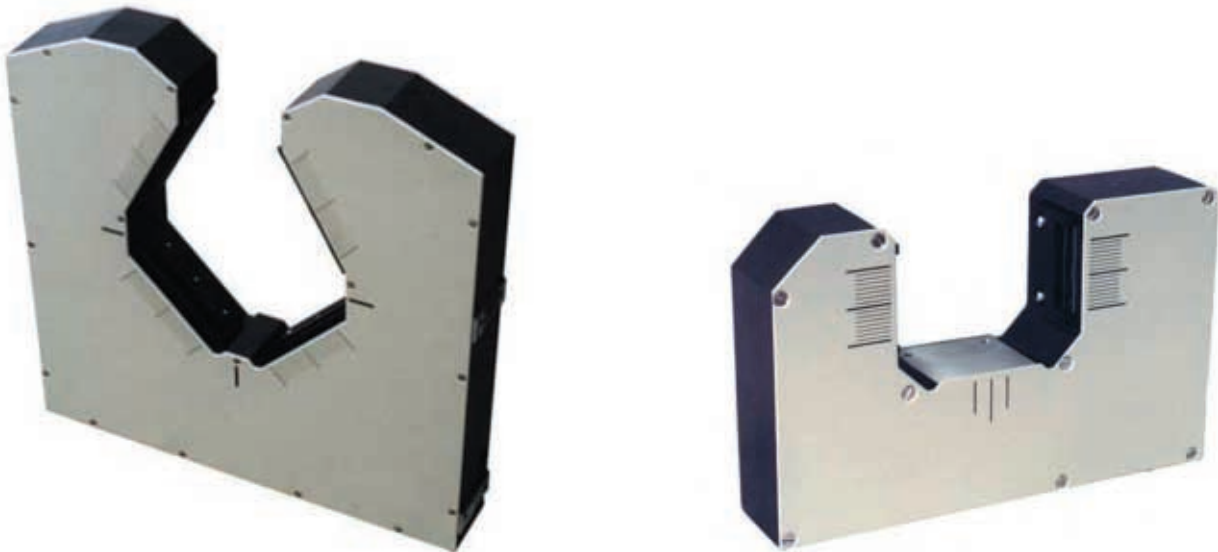


In Line Optical Diameter Gauges

The company BA-Messtechnik GmbH, former Bruno Richter Mess-Systeme has been a manufacturer of in line measurement technics for wire, cable and fiber production for the past 40 years. We introduce a new generation of optical diameter gauges.

The contactless, optical diameter gauges of the QS-LINE series cover measurement ranges of 0,2 – 130 mm. They are available as 1-axis and 2-axis units. Special oscillating systems measure thickness and width of flat materials and whole profiles of rounds.



The gauge heads do not contain any mechanically moving parts. A long lifetime of at least 100 000 hrs is ensured.

The gauges can be connected directly to a PC, or they can be operated with diverse display/controller units, starting from simple keyboards with display up to multifunctional units with statistical function incl. numerical and graphic output.

We emphasize the exceptionally favourable cost and the excellent performance rate of the new QS-LINE series.

In Line Optical Diameter Gauges

The QS-LINE 1-axis gauges, type DOX and 2-axis gauges type DOXY are used for optical dimension measuring for all kinds of products.

The gauge head consists of a sturdy aluminium housing with integrated serial interface RS 485 or RS 232. By means of an included softwarepackage the gauge can run directly with a PC. Diverse control units for display, value setting, calibration and SPC-functions are available. QS-LINE gauges and the regarding control units distinguish themselves by compact design, high precision and very easy operation.

SPECIFICATIONS

Type	Measuring range	Measuring rate	Accuracy*	Accuracy ** with recalibration
DO 40 X	0.2...35 mm	400/sec.	5 µm	1 µm
DO100 X	0.5...90 mm	400/sec.	10 µm	2 µm
DO150 X	0.7,,130 mm	400/sec.	15 µm	3 µm
DO40XY	2x 0.2...35 mm	2x 400/sec.	5 µm	1 µm
DO100XY	2x 0.5...90 mm	2x 400/sec.	10 µm	2 µm
DO150XY	2x 0.7...130 mm	2x 400/sec	15 µm	3 µm

Power supply for all gauges: 230 V AC/ +/- 12 V DC

* = accuracy for whole diameter range and measuring field

** = accuracy with recalibration for a specific diameter and location

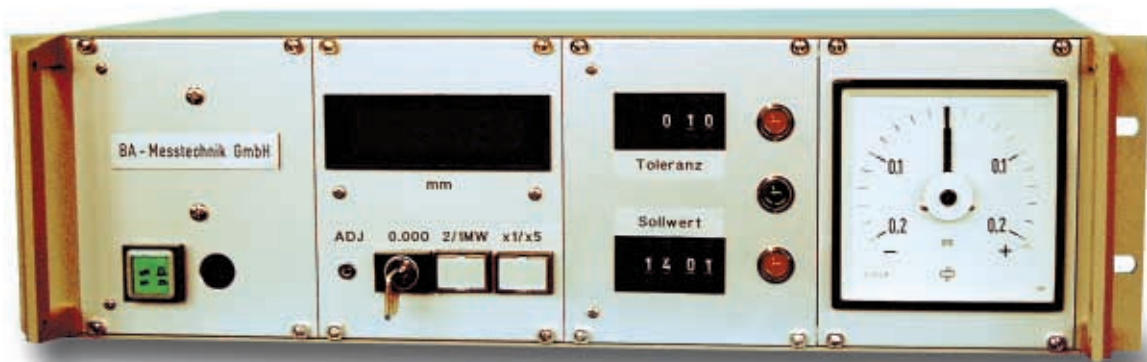
OPTIONS:

Statistic reports, printer port, dirt logic, glass logic, optical/acoustic alarm signals.

Analog output, window protection, calibrating masters

In Line Optical Diameter Gauges

Display- and Control Unit CS1



- display of DOXY selectable for mean value / ovality
- 5 resp. 6 digit display per measurement axis
- digital pot for calibration
- key switch for calibration
- measurement rate selection 1/2/10 –values/sec.
- min. / max. tolerance switches
- interfaces RS 232 or 485 or 422
- optional – analog offsize indication
- optional – analog output of actual or off-size value
- optional –Ethernet – interface
- optional – Profibus...